

This Provisional PDF corresponds to the article as it appeared upon acceptance. Fully formatted PDF and full text (HTML) versions will be made available soon.

Use and management of traditional medicinal plants by Maale and Ari ethnic communities in southern Ethiopia

Journal of Ethnobiology and Ethnomedicine 2014, **10**:46 doi:10.1186/1746-4269-10-46

Berhane Kidane (Berhanekid19@yahoo.com)
Tinde van Andel (Tinde.vanandel@naturalis.nl)
Laurentius Josephus van der Maesen (l.maesen3@upcmil.nl)
Zemedede Asfaw (zasfaw49@yahoo.com)

ISSN 1746-4269

Article type Research

Submission date 26 November 2013

Acceptance date 30 April 2014

Publication date 4 June 2014

Article URL <http://www.ethnobiomed.com/content/10/1/46>

This peer-reviewed article can be downloaded, printed and distributed freely for any purposes (see copyright notice below).

Articles in *Journal of Ethnobiology and Ethnomedicine* are listed in PubMed and archived at PubMed Central.

For information about publishing your research in *Journal of Ethnobiology and Ethnomedicine* or any BioMed Central journal, go to

<http://www.ethnobiomed.com/authors/instructions/>

For information about other BioMed Central publications go to

<http://www.biomedcentral.com/>

© 2014 Kidane *et al.*

This is an Open Access article distributed under the terms of the Creative Commons Attribution License (<http://creativecommons.org/licenses/by/2.0/>), which permits unrestricted use, distribution, and reproduction in any medium, provided the original work is properly credited. The Creative Commons Public Domain Dedication waiver (<http://creativecommons.org/publicdomain/zero/1.0/>) applies to the data made available in this article, unless otherwise stated.

Use and management of traditional medicinal plants by Maale and Ari ethnic communities in southern Ethiopia

Berhane Kidane^{1,2,*}

* Corresponding author

Email: Berhanekid19@yahoo.com

Tinde van Andel³

Email: Tinde.vanandel@naturalis.nl

Laurentius Josephus Gerardus van der Maesen³

Email: l.maesen3@upcmail.nl

Zemedet Asfaw⁴

Email: zafaw49@yahoo.com

¹ Ethiopian Institute of Agricultural Research, Forestry Research Center, P.O. Box 58532, Addis Ababa, Ethiopia

² Biosystematics Group, Wageningen University and Research Center, P.O. Box 647, 6700 Wageningen, AP, The Netherlands

³ Naturalis Biodiversity Center, Leiden University, P.O. Box 9517, 2300 Leiden, RA, The Netherlands

⁴ Department of Plant Biology and Biodiversity Management, The National Herbarium, Addis Ababa University, P.O. Box 3434, Addis Ababa, Ethiopia

Abstract

Background

Around 80% of the people of Ethiopia are estimated to be relying on medicinal plants for the treatment of different types of human health problems. The purpose of this study was to describe and analyse the use and management of medicinal plants used for the treatment of human health problems by the Maale and Ari communities in southern Ethiopia.

Methods

Quantitative and qualitative ethnobotanical field inquiries and analytical methods including individual and focus group discussions (18), observations, individual interviews (n = 74), preference ranking and paired comparison were used. Data were collected in three study sites and from two markets; the latter surveyed every 15 days from February 2011 to February 2012.

Results

A total of 128 medicinal plant species, belonging to 111 genera and 49 families, used as herbal medicine by Maale and Ari communities were documented. Predominantly harvested plant parts were leaves, which are known to have relatively low impact on medicinal plant resources. Species with high familiarity indices included *Solanum dasyphyllum*, *Indigofera spicata*, *Ruta chalepensis*, *Plumbago zeylanica* and *Meyna tetraphylla*. Low Jaccards similarity indices (≤ 0.33) indicated little correspondence in medicinal plant use among sites and between ethnic communities. The dominant ways of medicinal plant knowledge acquisition and transfer is vertical: from parents to children through oral means. Gender and site significantly influenced the number of human medicinal plants known currently in the study sites. Age was only a factor of significance in Maale. Marketing of medicinal plants harvested from wild and semi-wild stands is not common. Expansion of agricultural land and lack of cultivation efforts by local communities are mentioned by locals to affect the availability of medicinal plant resources.

Conclusion

S. dasyphyllum, *I. spicata*, *P. zeylanica*, *M. tetraphylla*, and *Oxalis radicata* need to be considered for phytochemical and pharmacological testing to verify their efficacy and determine their dosages. Land use planning and development initiatives in the area and beyond need to sharply focus on strategies that could alleviate the major threats affecting medicinal plant resources in the landscape and encourage their cultivation to enhance their availability and complement ex-and in-situ conservation.

Background

Ethiopia is a country with regional differences in access to health services [1]. It is estimated that traditional medicine (about 95% herbal) is used by 80% of the Ethiopian population for the treatment of different types of human health problems [2]. Medicinal plants are used as a major source for health promotion, prevention and cure [3,4]. The traditional use of medicinal plants by most Ethiopians in health care system is generally ascribed to the incomplete coverage of the modern medical system, unaffordable and not always available prescription drugs [5-7] and the widespread belief in the effectiveness of herbal medicine [8,9].

Medicinal plant knowledge is shaped by the ecological diversity of the country [10], known to be site-specific [11] and varies across peoples with different religious, linguistic and cultural backgrounds [7]. In Ethiopia, there are over 70 ethnic communities, residing in different ecological regions [12] and the studies so far have shown extensive medicinal plant knowledge, acquired through centuries of experience. Although several studies have been conducted on medicinal plants throughout the country e.g. [13-18], the full wealth of this knowledge has not yet been sufficiently studied. We therefore document medicinal plants used by the Maale and Ari communities less studied Ethiopian communities and evaluate similarities and differences among sites and between the two communities.

Ethiopian farmers' knowledge on medicinal plants may be influenced by certain demographic characteristics. Awas [11] and Giday et al. [16] showed that gender and age significantly affected farmers' knowledge on traditional medicine. However, in other farming communities, gender and age had no significant effect on useful plant knowledge [19]. In

order to effectively preserve indigenous knowledge, we need to find out whether socio-demographic factors (age, gender, religion, educational level, family size) or locality affect the level of medicinal plant knowledge among the Maale and Ari communities.

Traditionally used medicinal plants and associated knowledge are disappearing at an alarming rate [20]. Natural and anthropogenic factors contribute to these losses but threatening factors may vary from one region to the other [17]. Therefore, we want to understand factors that threaten local traditional medicinal plant resources and knowledge, which are important for decision makers for their policy formulation and analysis. Mechanisms of medicinal plant knowledge acquisition and transfer affect knowledge continuity within a community. Most studies conducted in Ethiopia so far have shown that the major mechanism for transfer of ethnomedicinal knowledge is oral [20], although Fassil [8] indicated existence of pharmacopias (ancient written medicinal plant knowledge) in monasteries in the northern highlands of Ethiopia. In order to preserve herbal medicine traditions, we need to reveal the local mechanisms of knowledge transfer.

Marketing of medicinal plants may have implications on natural resources, depending on the species marketed, the type of plant part harvested, volumes sold and cultivation efforts of commercial species. A few of the ethnobotanical studies in Ethiopia attempted to highlight the issue of marketing of medicinal plants [21,16]. However, the studies were of cross-sectional nature and did not conduct systematic repeated visits and data collection and elements that affect the marketing of traditional medicinal plants were hardly addressed. In this paper, we describe and analyse the use and management of medicinal plants by Maale and Ari communities by answering the following research questions:

- 1) Which plant species are used as medicines at different sites by the two communities and for what purposes?
- 2) What are the mechanisms of herbal medicinal plant knowledge transfer among different social groups?
- 3) Which demographic factors significantly influence medicinal plant knowledge?
- 4) How do the two communities differ in their use and handling of medicinal plants?
- 5) What factors threaten medicinal plant resources in the study area?
- 6) Which medicinal plants are commercialized and what elements affect their marketing?

Materials and methods

Study area and selection of informants

The study was conducted in the Maale and Debub Ari districts of southern Ethiopia, where the Maale and Ari communities reside. The study area is located at about 750 km south of the Ethiopian capital, Addis Ababa.

A reconnaissance survey was conducted from July to August 2010 in the two study districts. Well settled areas by the two ethnic communities within the two districts studied. Detailed fieldwork was conducted from August 2010 to October 2012. Prior to detailed data collection, individual and focus group discussions (18) with informants were conducted. At each kebele (the lowest formal administrative unit in rural Ethiopia), 10 to 12 informants from different socio-demographic groups were involved in the focus group discussions. In general we used stratified simple random sampling for the selection of the study sites, study

kebeles and study participants. The stratifying variables were ethnic communities and altitude. The three study sites selected for detailed formal survey were Maale, Ari 1 and Ari 2 (Figure 1). For each site, two kebeles (Shole teka and Beneta in Maale, Kure and Geza in Ari 1 and Pilla and Metser in Ari 2) were randomly selected (Figure 1). The Ari 1 and Maale study kebeles were selected from the area with altitude of 500-1500 m.a.s.l. However, the Ari 2 study site is located within altitude ranging from 1500-2500 with mean altitude of 1700 m. Despite the presence of areas with altitude ranging from 1500-2500 in Maale district, the area was not included in the study because there are no substantial settlements.

Figure 1 Location map of the study area in southern Ethiopia.

Acacia - Commiphora and *Combretum – Terminalia* woodland is characterizes the remnant vegetation of Maale study site; the mean altitude of the selected study site is 1350 m.a.s.l. The remnant vegetation of Ari 1 is characterized by moist evergreen Afromontane forest and *Combretum – Terminalia* woodland [22] with a mean altitude of 1330 m.a.s.l. The forest area is converted to agricultural land, with scattered trees in the fields and home gardens of Ari 2. The language of Ari is Araf, while the Maale language is spoken by the Maale communities. The 2007 population census shows that there were 84657 in Maale and 212 389 in Debub Ari [23].

A total of 74 study participants (24 from Ari 1, 24 from Ari 2 and 26 from Maale), belonging to the two ethnic communities were considered for the interviews. The age range of randomly selected study participants lied between 20 and 60 except a single participant who was older: 70 years. Oral informed consent was obtained from each participant prior to conducting the interviews.

Ethical approval

Written permission (approval) was obtained from South Omo “zonal” council and also from the Maale and Debub Ari district council offices before the start of the study.

Consent

Oral and also signed informed consent were obtained from the study participants for the publication of this report and any accompanying images.

Data collection

We used semi-structured interviews, field observations, preference ranking and paired comparison following the standard ethnobotanical methods and procedures as given by various authors [24-26] to collect information on various aspects of medicinal plants in the two districts. The semi-structured interviews contained questions on common health issues, medicinal plants, plant parts used, preparation and application methods, dosage, and possible threats to medicinal plant resources. Moreover, study participants were asked how they acquired medicinal plant knowledge and whether they were willing to transfer this knowledge. Each informant was visited at least two times during the study period in order to validate the information provided. Following the recommended procedures by Alexiades [25], responses of the study participants that contradicted with each other were not considered for analysis.

Voucher specimens of medicinal plants were collected with the assistance of key informants following standard botanical procedures. Preliminary plant identification was done in the field while collecting and further identification and confirmation was done at the National Herbarium (ETH) of Addis Ababa University (AAU) using taxonomic keys provided in the relevant volumes of the Flora of Ethiopia and Eritrea [27-33]. Finally, the identified specimens were deposited at the ETH. Scientific names were checked for accuracy by means of the Plant List [34].

Between February 2011 and February 2012, surveys were carried out at Beneta market (Maale area) and Jinka market (Debub Ari). Markets were visited every fifteen days and all medicinal plants sold were documented with their price, source and additional trade information.

Data analysis

Descriptive statistics were used to calculate average numbers of medicinal plants and illness types listed by the study participants, and to quantify acquisition and transfer of traditional knowledge. In Maale, ten key informants were selected to participate in a preference ranking exercise following Martin [24] for eight plants used to treat the most frequently cited health problem (in this case ascariasis). Key informants ranked plant species according to their perceived efficacy: the most effective being given a value of one, and the least effective a value of eight. Priority ranking was used to classify major issues that affected the availability of medicinal plants in the study sites.

The calculated Jaccard's similarity indices [35] were used to compare similarity of medicinal plant knowledge among the studied communities. This index uses plant presence/positive reply or absence /negative reply data sets and is expressed as:

$$JI = \frac{c}{a + b + c}$$

Where JI is the Jaccard similarity index, c is the number of species shared by the study sites, a is the number of species in study site A only and b is the number of species in study site B only. The JI values range between 0 and 1, whereby a value of 1 indicates complete similarity.

Familiarity index (FI) was used as an indicator of the popularity of a species [36]. FI was defined as the number of respondents that mentioned a species for a specific use, divided by the total number of respondents. The value of FI varies between 0 and 1, whereby a value of 1 represents the highest familiarity of a medicinal plant in the study site.

$$FI = \frac{\text{Frequency of a given species mentioned as a medicine}}{\text{Total number of respondents}}$$

Multiple regression analysis was employed to reveal demographic factors that predicted traditional knowledge [37]. We used the number of plants known as dependent variable and considered age, gender, religion, education level, family size and geographic location as explanatory variables. Variables that were highly correlated ($r \geq 0.9$) were not included in the

model [37]. Independent t-tests were employed to compare the differences between gender and age groups. All statistical methods were carried out in the program SPSS 20.0.

Results and discussion

Medicinal plants reported

A total of 128 medicinal plant species, belonging to 111 genera and 49 families were reported by Maale and Ari communities for the treatment of 48 different types of health problems (see Table 1). The family Lamiaceae was represented by the highest number of species (19) followed by Leguminosae (10 species), Acanthaceae, Solanaceae, Cucurbitaceae, and Malvaceae (each 8 spp) and Rubiaceae and Compositae (6 spp each). The highest number (92 spp) was reported in Maale, while 54 species were jointly documented in Ari 1 and Ari 2, of which 18 species were shared. Medicinal plants were used as the first line of treatment by 96%, 83%, and 88% of the respondents of Maale1, Ari 1 and Ari 2 respectively. This indicates that traditional medicine plays a significant role in the primary health care system of the Maale and Ari communities.

Table 1 Medicinal plants used in Maale and Ari communities with plant parts used, growth form and applications

| Nº | Vernacular names: Maale (M), Araf (A) | Ailments | Scientific name | Family Name | Voucher Nº | Parts used | Growth form | Application route | Study sites |
|----|--|--|--|----------------|--------------------|--------------|-------------|-------------------|-----------------|
| 1 | Tsinkaso (M) | Eye disease (infection), Headache | <i>Barleria ventricosa</i> Hochst. ex Nees | Acanthaceae | 210 , 356 | Leaves | Herb | Topical | M |
| 2 | Moro Golodo (M) | Gastritis | <i>Blepharis maderaspatensis</i> (L.) Roth. | Acanthaceae | 234, 637 | Whole | Herb | Oral | M |
| 3 | Golodo (M) | Oral trash, Gastritis, Malnutrition | <i>Justicia bizuneshiae</i> Ensermu | Acanthaceae | 357 | Leaves | Herb | Oral | M |
| 4 | Busino (M) | Amoebiasis, Stomach ache, Diarrhea | <i>Hypoestes forsskaolii</i> (Vahl) R. Br. | Acanthaceae | 30 | Root | Herb | Oral | M |
| 5 | Kati Murso (M) | Constipation, Ascariasis | <i>Thunbergia alata</i> Boj. ex Sims | Acanthaceae | 232,366, 391 | whole | Climber | Oral | M |
| 6 | Majimaylo(M) | Tape worm | <i>Celosia trigyna</i> L. | Amaranthaceae | 679 | Leaves | Herb | Oral | M |
| 7 | Tsami shinkurt (A) | Stomach ache | <i>Allium sativum</i> L. | Amaryllidaceae | - | Bulb | Herb | Oral | A1, A2 |
| 8 | Salvano (M) | Ascariasis | <i>Ozoroa insignis</i> Delile | Anacardiaceae | 177 224 289 302 | Stem bark | Tree | Oral | M |
| 9 | Kubri (M) | Diarrhea, Toothache, Food poisoning, Vomiting | <i>Rhus natalensis</i> Krauss | Anacardiaceae | 28 | Leaves | Shrub | Oral | M |
| 10 | Muralatse (M) | Food poisoning, vomiting | <i>Uvaria leptocladon</i> Oliv. | Annonaceae | 24 | Leaves | Shrub | Oral | M |
| 11 | Afi Deshe (A) | Evil eye | <i>Agrocharis melanantha</i> Hochst. | Apiaceae | 309 | Leaves | Herb | | A 2 |
| 12 | Etsewayo (M), Ountinkam (A) | Gastritis, Headache Evil eye | <i>Centella asiatica</i> (L.) Urban | Apiaceae | 36,128 | whole | Herb | Oral | M, A1, A2 |
| | | Swelling | <i>Centella asiatica</i> (L.) Urban | | | Whole | Herb | Topical | |
| 13 | Ambelto (M), Almi (A) | Tonsilites | <i>Carissa spinarum</i> L. | Apocynaceae | 33,119 | Leaves | Tree | Oral | M, A1 |
| | | Snake protection | <i>Carissa spinarum</i> L. | | | Root | Tree | Smoke | |
| | | Stomach ache, | <i>Carissa spinarum</i> L. | | | Root | Tree | Oral | |
| | | Evil eye | <i>Carissa spinarum</i> L. | | | Root | Tree | Inhale | |
| 14 | Pijie (M) | Ascariasis | <i>Pergularia daemia</i> (Forssk.) Chiov. | Apocynaceae | 304 | Root | Climber | Oral | M |

| | | | | | | | | | |
|----|------------------------------|---|---|----------------|---------|----------------------------|--------------------|--------------|-------|
| | | Malnutrition (Child) | <i>Pergularia daemia</i> (Forssk.) Chiov. | | | Leaves | | Oral | M |
| 15 | Metse (M) | Retained placenta | <i>Leptadenia hastata</i> (Pel's.) Decne. | Apocynaceae | 101 | Leaves | Shrub | Oral | M |
| | | Liver disease(Ara) | <i>Leptadenia hastata</i> (Pel's.) Decne. | | | Leaves | | Inhale | |
| 16 | Zolpe (M) | Liver disease (Ara) | <i>Stereospermum kunthianum</i> Cham. | Bignoniaceae | 282,402 | Leaves | Tree | Inhale | M |
| 17 | Achenti (A) | Stomach ache | <i>Cynoglossum lanceolatum</i> Forssk. | Boraginaceae | 2 | Root | Herb | Oral | A2 |
| 18 | Kolpo (M) | Common cold | <i>Brassica carinata</i> A. Braun | Brassicaceae | | Leaves | Herb | Oral | M |
| 19 | Feto | Common cold | <i>Lepidium sativum</i> L. | Brassicaceae | - | Seed | Herb | Oral | A2 |
| 20 | Afi Deshe (A) | Evil eye | <i>Monopsis stellarioides</i> (Presl) Urb. | Campanulaceae | 246 | Leaves | Herb | Oral | A2 |
| | Guni deshe (A) | Snake bite | <i>Monopsis stellarioides</i> (Presl) Urb. | | | | | | |
| 21 | Chedi (A) | Oral trash | <i>Garcinia livingstonei</i> T.Anders. | Clusiaceae | 14 | Fruit | Tree | Topical | A2 |
| 22 | Yemdir Berbere (A) | Tooth ache, Tonsillitis | <i>Acmella caulirhiza</i> Delile | Compositae | 89,313 | Flower | Herb | Topical | A1 |
| 23 | Dunko (M), Duno (A) | Stomach ache | <i>Artemisia absinthium</i> L. | Compositae | - | Leaves with stem | Herb | Oral | M, A1 |
| | | Evil eye, Sudden disease, Headache | <i>Artemisia absinthium</i> L. | | | Leaves with stem | | Oral/ Inhale | |
| 24 | Hachenti (M) | Diarrhea | <i>Bidens pilosa</i> L. | Compositae | 233 | Root | Herb | Oral | M |
| 25 | Azi deshe (A) | Swelling(eti) | <i>Conyza gouanii</i> (L.) Willd. | Compositae | 311 | Leaves | Herb | Topical | A2 |
| 26 | Rebasho (M) Haro mato (M) | Rheumatism | <i>Tagetes minuta</i> L. | Compositae | 203 | Leaves | Herb | Topical | M |
| | | Amoebiasis | <i>Tagetes minuta</i> L. | | | Leaves | Herb | Oral | |
| 27 | Gera (A) | Malaria | <i>Vernonia amygdalina</i> Delile | Compositae | - | leaves | shrub | Oral | M, A1 |
| 28 | Kwakuch deshe (A) | Skin disease ('Kwakucha) | <i>Cuscuta campestris</i> Yuncker | Convolvulaceae | 259 | Leaves with succulent stem | Herb | Topical | A1 |
| 29 | Lago (M) | Malnutrition (Child) Diarrhea,Hheart disease, Gastritis | <i>Ipomoea obscura</i> (L.) Ker-Gawl. | Convolvulaceae | 211 | Leaves | Herb/cli mber type | Oral | M |

| | | | | | | | | | |
|----|--------------------------------------|--|--|----------------------|----------|------------------|---------|--------------------------|-----------------|
| 30 | Welanke (M) | Liver disease | <i>Ipomoea spathulata</i> Hall.f. | Convolvulaceae | 173,404 | Leaves | Herb | Inhale | M |
| 31 | Kamakarsho (M) | Ascariasis | <i>Combretum aculeatum</i> Vent. | Combretaceae | 287,504 | Leaves | Shrub | Oral | M |
| 32 | Gaal (M) | Typoid Snake bite | <i>Terminalia brownii</i> L. <i>Terminalia brownii</i> L. | Combretaceae | | Leaves Bark | Tree | Oral Oral/ Topical | M |
| 33 | Hachirindo (M) | Lower extremity weakness Amoebiasis | <i>Cucumis dipsaceus</i> Ehrenb. ex Spach <i>Cucumis dipsaceus</i> Ehrenb. ex Spach | Cucurbitaceae | 15 | Leaves Whole | Herb | Topical Oral | M |
| 34 | Botayilashe (M), Bota (A) Bota | Tape worm Tape worm | <i>Cucurbita pepo</i> L. <i>Cucurbita pepo</i> L. | Cucurbitaceae | - | Seed Seed | Herb | Oral Oral | M, A1 |
| 35 | Shuntee (M) | Mouth wound | <i>Kedrostis foetidissima</i> (Jacq.) Cogn | Cucurbitaceae | 84 | Leaves | Herb | Topical | M |
| 36 | Choko (M) | Amoebiasis | <i>Momordica foetida</i> Schumach. | Cucurbitaceae | 204, 242 | Whole | Herb | Oral | M |
| 37 | Najie (M) | Evil eye Amoebiasis | <i>Momordica pterocarpa</i> Hochst. ex A. Rich. <i>Momordica pterocarpa</i> Hochst. ex A. Rich. | Cucurbitaceae | 20 | Leaves Leaves | Climber | Topical Oral | M |
| 38 | Ounsi (M) | Stomach ache | <i>Euclea divinorum</i> Hiern | Ebenaceae | 26 | Root | Shrub | Oral | M |
| 39 | Sauto zao (M) | Stomach bloating, food poisoning, Vomiting Stomach ache | <i>Acalypha fruticosa</i> Forssk. <i>Acalypha fruticosa</i> Forssk. | Euphorbiaceae | 98 | Leaves Stem | Shrub | Oral Oral | M M |
| 40 | Sauti (M) | Eye injury | <i>Acalypha volkensii</i> Pax | Euphorbiaceae | 223 | Leaves | Herb | Topical | M |
| 41 | No local name | Eye disease (Cataract) | <i>Euphorbia hirta</i> L. | Euphorbiaceae | 496 | Latex | Herb | Topical | M |
| 42 | Tsedo (M) | Rabies | <i>Euphorbia tirucalli</i> L. | Euphorbiaceae | 285 | Root | Shrub | Oral | M |
| 43 | Tsamo desho (M) | Wound | <i>Ricinus communis</i> L. | <u>Euphorbiaceae</u> | 350 | Seed | Shrub | Topical | M,A2 |
| 44 | Beto (M) Beta (A) | Gonorrhoea ,Tape worm | <i>Croton macrostachyus</i> Hochst. ex Ferret & Galinier | <u>Euphorbiaceae</u> | | Leaf bud | Tree | Oral | M, A1, A2 |
| 45 | Gaina deshe/Azi deshe (A) | Stomach bloating, Swelling | <i>Geranium arabicum</i> Forssk. <i>Geranium arabicum</i> Forssk. | Geraniaceae | 312,445 | Leaves Leaves | Herb | Oral Topical | A2 |

| | | | | | | | | | |
|----|--|--|---|--------------|--------------------|--------|-------|----------------------|-----------|
| 46 | Bato ketero deshe (M) | Amoebiasis | <i>Pelargonium quinquelobatum</i> Hochst. ex A.Rich., | Geraniaceae | 227 | Whole | Herb | Oral | M |
| 47 | Afi Deshe (A) | Evil eye | <i>Hypericum peplidifolium</i> A.Rich. | Hypericaceae | 263 | Leaves | Herb | Oral | A1, A2 |
| 48 | Harsi deshe/ Gaina deshe/Shai Shar (A) | Diarrhea | <i>Ajuga leucantha</i> Lukhoba | Lamiaceae | 274, 278, 441 | Leaves | Herb | Oral | A1, A2 |
| 49 | Baye Apo Desho (M) | Stomach ache, Heart , Rheumatism | <i>Becium filamentosum</i> (Forssk.) Chiov. | Lamiaceae | 196,221,324 | Whole | Herb | Oral | M |
| 50 | Bokolo (M), Dumfeken (A) | Stomach bloating, vomiting | <i>Clerodendrum myricoides</i> (Hochst.) Vatke | Lamiaceae | 195,346 | Leaves | Shrub | Oral | M, A1, A2 |
| | | Evil eye | <i>Clerodendrum myricoides</i> (Hochst.) Vatke | Lamiaceae | 38 | Root | Shrub | Oral ,Inhale | |
| 51 | Apo Desho (M) | Evil eye | <i>Endostemon tereticaulis</i> (Poir.) M.Ashby | Lamiaceae | 99,165 | Whole | Herb | Topical | M |
| 52 | Tsamo desho (M) | Cold | <i>Fuerstia africana</i> T.C.E. Fr. | Lamiaceae | 230 | Leaves | Herb | Topical | M |
| 53 | Pelo Tsala (M) | Stomach ache, Amoebiasis, Stomach bloating, Head ache, Food poisoning, Vomiting Rheumatism | <i>Leucas abyssinica</i> (Benth.) Briq. | Lamiaceae | 167,321 | Leaves | Shrub | Oral | M |
| | | | <i>Leucas abyssinica</i> (Benth.) Briq. | | | Leaves | | Topical | |
| 54 | Chergicola | Pus from Ear, nose, mouth; Eye disease (cataract), Rheumatism Headache | <i>Leucas glabarata</i> (Vahl) Sm. in Rees | Lamiaceae | 237, 281, 320, 365 | Leaves | Herb | Topical | M |
| | | | | | | Leaves | | Oral/ inhale Topical | |
| 55 | Azi deshe | Swelling | <i>Leucas martinicensis</i> (Jacq.) R.Br. | Lamiaceae | 315 | Leaves | Herb | Topical | A2 |
| 56 | Lamo (M) | Stomach ache | <i>Ocimum basilicum</i> L. | Lamiaceae | 222 ,317 | Leaves | Herb | Oral | M |
| 57 | Gurdarindo (M) | Headache, Diarrhea Stomach bloating, Stomach ache, Vomiting | <i>Ocimum forskolei</i> Benth. | Lamiaceae | 214 , 235 | Whole | Herb | Oral | M |
| 58 | Pasi kedo | Heart disease | <i>Ocimum laliifolium</i> Hochst. ex Benth. | Lamiaceae | 225,37 | Leaves | Herb | Oral | M, |
| | Demakesse | Headache | <i>Ocimum lamifolium</i> Hochst. ex Benth. | | 134 | Leaves | | Oral/ Inhale | A1, A2 |

| | | | | | | | | | |
|----|--|--|--|-------------|----------------------------------|--------|-------|---------|-----------|
| 59 | Kuliti kup (M) | Herpes simplex ("Mich") | <i>Ocimum urticifolium</i> Roth | Lamiaceae | 133 | Leaves | Shrub | Topical | A1, A2 |
| | | Stomach ache, Vomiting | <i>Ocimum urticifolium</i> Roth | | | | | Oral | |
| | | Headache | <i>Ocimum urticifolium</i> Roth | | | | | Inhale | |
| 60 | Pero (M) | Amoebiasis, Stomach ache | <i>Plectranthus barbatus</i> Andrews | Lamiaceae | 85 | Root | Herb | Oral | M |
| 61 | Dumio (M) | Lower extremity weakness | <i>Plectranthus cylindraceus</i> Hochst. ex Benth. | Lamiaceae | 229,503 | Leaves | Herb | Topical | M |
| 62 | Ketero Desho Solelo (M) | Stomach ache, Amoebiasis, Diarrhea | <i>Plectranthus longipes</i> Baker | Lamiaceae | 464 | whole | Herb | Oral | M |
| 63 | Banjirindo (M) | Ease of Birth | <i>Plectranthus punctatus</i> (L.f) L. Hér. | Lamiaceae | 207,318,369 | Whole | Herb | Oral | M |
| 64 | Anchip (M) | Amoebiasis, Diarrhea, Stomach bloating, Stomach ache, Food poisoning | <i>Pycnostachys abyssinica</i> Fresen. | Lamiaceae | 205, 319 | Leaves | Herb | Oral | M |
| 65 | Sheto (M) | Constipation | <i>Satureja abyssinica</i> (Benth.) Briq. | Lamiaceae | 292, 690 | Leaves | Herb | Oral | M |
| 66 | Zene gaime Deshe (A) | Stomach ache | <i>Satureja paradoxa</i> (Vatke) Engl. ex Seybold | Lamiaceae | 310, 371 | Leaves | Herb | Oral | A2 |
| 67 | Kayneka/Digita (A) | Stomach ache | <i>Calpurnia aurea</i> (Ait.) Benth. | Leguminosae | 247,272 | Leaves | shrub | Oral | A1, A2 |
| | | Diarrhea | <i>Calpurnia aurea</i> (Ait.) Benth. | | | Root | Herb | Oral | |
| 68 | Aro Dor deshe (M) | Malnutrition (Child) | <i>Chamaecrista mimosoides</i> (L.) Greene | Leguminosae | 197,322 | Whole | Herb | Oral | M |
| 69 | Dongordoso (M) | Tonsilites | <i>Indigofera spicata</i> Forssk. | Leguminosae | 202, 251, 256,261, 345,388 | Root | Herb | Oral | M, A1 |
| | Afi Deshe/Gaina Deshe/Wesfat deshe (A) | Diarrhea, Evil eye Ascariasis, Stomach ache | <i>Indigofera spicata</i> Forssk. | | 467 | Whole | | Oral | |
| 70 | Birbira (A) | To close wound caused by Jiggers | <i>Millettia ferruginea</i> (Hochst.) Baker | Leguminosae | - | Seed | Tree | Topical | A2 |
| 71 | Dawrake (M) | Liver disease | <i>Piliostigma thonningii</i> (Schumach.) Milne-Redh. | Leguminosae | 117 | Leaves | Tree | Inhale | M |
| 72 | Ara Deshe (A) | Liver disease (Ara) | <i>Senna petersiana</i> (Bolle) Lock | Leguminosae | 260 | Leaves | Shrub | Inhale | A1, A2 |

| | | | | | | | | | |
|----|-----------------------------------|--|--|----------------|-------------|----------------------------|-------|---------------------|-----------|
| 73 | Karhaleko (M) | Stomach ache, Diarrhea , Food poisoning, Vomiting, Ascariasis | <i>Senna singueana</i> (Delile) Lock | Leguminosae | 59,28 | Root | Shrub | Oral | M |
| 74 | Dino desho (M) | Diarrhea (Children) Snake bite | <i>Stylosanthes fruticosa</i> (Retz.) Alston <i>Stylosanthes fruticosa</i> (Retz.) Alston | Leguminosae | | Leaves Root | Herb | Oral Oral | M |
| 75 | Dolkoiso (M) | Stomach ache, Vomiting | <i>Tephrosia bracteolata</i> Guill. & Perr. | Leguminosae | 291 | Leaves | Shrub | Oral | M |
| 76 | Seringo demo golodo (M) | Gastritis | <i>Zornia pratensis</i> Milne-Redh. | Leguminosae | 192, 328 | Leaves | Herb | Oral | M |
| 77 | Polo Golodo (M) | Stomach ache, Diarrhea, Gastritis | <i>Abutilon longicuspe</i> Hochst. ex A.Rich | Malvaceae | 193 | Leaves | Herb | Oral | M |
| 78 | Putu (M) | Heart, food poisoning Ear ache | <i>Gossypium herbaceum</i> L. <i>Gossypium herbaceum</i> L. | Malvaceae | 621 | Leaves Leaf bud | Shrub | Oral Topical | M |
| 79 | Wari Beshe (M) Civil deshe (A) | Oral trash, Diarrhea , Malnutrition (Child) Fresh cut to stop bleeding | <i>Kosteletzkyia adoensis</i> (Hochst. ex A.Rich.) Mast. <i>Kosteletzkyia adoensis</i> (Hochst. ex A.Rich.) Mast. | Malvaceae | 209,368,465 | Leaves Leaves | Herb | Oral Topical | M, A1 |
| 80 | Chuksha (A) | Swelling | <i>Sida rhombifolia</i> L. | Malvaceae | 93, 314 | Leaves | Herb | Topical | A2 |
| 81 | Kautso (M) | Vomiting, Food poisoning | <i>Sterculia africana</i> (Lour.) Fiori | Malvaceae | 47 | Leaves | Tree | Oral | M |
| 82 | Gontersa (M) | Snake bite, Liver disease | <i>Bersama abyssinica</i> Fresen. | Melianthaceae | 436,475 | Stem bark | Shrub | Oral/ Topical | A1, A2 |
| 83 | Chorahe (M) | Amoebiasis Swelling | <i>Chasmanthera dependens</i> Hochst. <i>Chasmanthera dependens</i> Hochst. | Menispermaceae | 100 | Stem | Herb | Oral Topical | M |
| 84 | Balari (M) | Amoebiasis, Diarrhea, Rabies, Stomach ache | <i>Cissampelos mucronata</i> A.Rich. | Menispermaceae | 29,96 | Root | Herb | Oral | M |
| 85 | Haleko, Kellengi (A) | Eye disease (cataract) Malaria | <i>Moringa stenopetala</i> (Bak.) Cuf. <i>Moringa stenopetala</i> (Bak.) Cuf. | Moringaceae | - | Stem bark Leaves | Tree | Topical Oral | M, A1 |
| 86 | Musi (A) | Diarrhea | <i>Musa paradisiaca</i> L. | Musaceae | - | Fruit | Herb | Oral | A1 |
| 87 | Enkoko (A) | Tape worm | <i>Embelia schimperii</i> Vatke | Myrsinaceae | - | Seeds | Shrub | Oral | A2 |
| 88 | Diko (M) | Lower extremity weakness, Rheumatism | <i>Commicarpus grandiflorus</i> (A.Rich) Standley | Nyctaginaceae | | Leaves | Herb | Topical | M |

| | | | | | | | | | |
|-----|-----------------------------------|---|--|----------------|-------------------------|-------------------------------------|---------|---------------------|-------------|
| 89 | Mukalle (M) | Wound | <i>Ximenia caffra</i> Sond. | Olaceae | 22 | Seed | Tree | Topical | M |
| 90 | Chamo (M) | Tape worm | <i>Jasminum grandiflorum</i> L subsp. floribundum (R.Br. ex Fresen.) P.S.Green: | Oleaceae | 415,727 | | Climber | Oral | M |
| 91 | Rimiti (M) | Ascariasis, Gonorrhea | <i>Olea europaea</i> L. subsp. <i>cuspidata</i> (Wall.ex G.Don) Cif. | Oleaceae | 108 | Leaves | Tree | Oral | M |
| 92 | Afi deshe (Bere Keno) (A) | Evil eye | <i>Biophytum umbraculum</i> Welw. | Oxalidaceae | 264 | Leaves | Herb | Oral | A2 |
| 93 | Solcarindo (M), Kinsa kins (A) | Malnutrition (children) Diarrhea , Tooth ache, Stop fresh cut bleeding | <i>Oxalis radicata</i> A. Rich. | Oxalidaceae | 212, 326 | Leaves with succulent stem | Herb | Oral | M, A1 |
| 94 | Azi (ite) deshe | Swelling | <i>Phyllanthus ovalifolius</i> Forssk. | Phyllanthaceae | 200 | Leaves | Shrub | Topical | A1,A2 |
| 95 | Afi Deshe (A) | Evil eye | <i>Phyllanthus rotundifolius</i> Willd | Phyllanthaceae | 244, 305 | Leaves | Herb | Oral | A1 |
| 96 | Tolsi (M), Andod (A) | Gonorrhea, Stomach bloating | <i>Phytolacca dodecandra</i> L 'Hérit. | Phytolaccaceae | 97,241 | Leaves | Climber | Oral | M,A1 |
| 97 | Kurupe (M), Guni deshe (A) | Tooth ache Snake bite | <i>Plumbago zeylanica</i> L. <i>Plumbago zeylanica</i> L. | Plumbaginaceae | 90, 279, 284,306,367 | Root bark Whole | Climber | Topical Oral | M, A1,A2 |
| 98 | Tsoralle (M) | Skin burns | <i>Portulaca quadrifida</i> L. | Portulacaceae | | Leaves | Herb | Topical | M |
| 99 | Wuchanbe (M) | Tape worm | <i>Myrsine africana</i> L. | Primulaceae | 178 | Seed | Shrub | Oral | M |
| 100 | Gero (M) | Tooth ache | <i>Faurea speciosa</i> Welw. | Proteaceae | 109,413 | Leaves | Tree | Topical | M |
| 101 | Dishoo (M) | Ear ache Headache | <i>Clematis hirsuta</i> Perr. & Guill. <i>Clematis hirsuta</i> Perr. & Guill. | Ranunculaceae | 110,231 | Leaves Leaves | Climber | Topical Oral | M |
| 102 | Afi Deshe (M) | Evil eye Tonsillitis | <i>Ranunculus multifidus</i> Forssk. <i>Ranunculus multifidus</i> Forssk. | Ranunculaceae | 381,111, 270 | Leaves | Herb | Topical Oral | A2 |
| 103 | Ziambee | Ascariasis | <i>Caylusea abyssinica</i> (Fresen.) Fisch. & Mey | Resedaceae | 16 | Leaves | Herb | Oral | M |
| 104 | Kulmi (A) | Tonsillities | <i>Rhamnus prinoides</i> L.'Hérit. | Rhamnaceae | - | Leaves | Shrub | Oral | A1, A2 |
| 105 | Kosso (A) | Tape worm | <i>Hagenia abyssinica</i> | Rosaceae | - | Flower | Tree | Oral | M, |

| | | | | | | | | | | |
|-----|-----------------------------|--|--|--------------|-----------------------|----------------------------|-------|---------------|--|----------|
| | | | (Brace) J.F.Gmel. | | | | | | | A2 |
| 106 | Afi Deshe(b) | Evil eye | <i>Oldenlandia lancifolia</i> | Rubiaceae | 245 | Leaves | Herb | Oral | | A1 |
| | | | (Schumach.) DC. | | | | | | | |
| 107 | Wari ampi (M) | Liver disease (Ara) | <i>Pavetta gardeniifolia</i> | Rubiaceae | 325 | Leaves | Shrub | Inhale | | M |
| | | Common cold | <i>Pavetta gardeniifolia</i> A Rich. | | | | | | | |
| 108 | Afi deshe/ gaina deshe (A) | Diarrhea, Evil eye, Tooth ache, Stomach ache, Head wound | <i>Pentas lanceolata</i> (Forssk.) Deflers | Rubiaceae | 277,243,250, 276, 249 | Root | Herb | Oral | | A1, A2 |
| 109 | Garo (M) | Ascariasis | <i>Vangueria apiculata</i> K. Schum. | Rubiaceae | 8,157 | Leaves | Shrub | Oral | | M |
| 110 | Gembala (M) | Malaria | <i>Gardenia ternifolia</i> Schumach. & Thonn. | Rubiaceae | 352 | Leaves | Tree | Oral | | M |
| 111 | Onaki (M) | Ascariasis | <i>Meyna tetraphylla</i> (Schweinf. ex Hiern) Robyns | Rubiaceae | 4 | Leaves | Tree | Oral | | M |
| 112 | Lomi (A) | Oral trash; Food poisoning | <i>Citrus aurantiifolia</i> (Christm.) Swingle | Rutaceae | - | Fruit | Tree | Oral | | A1 |
| 113 | Tselto (M) | Stomach ache, common cold | <i>Ruta chalepensis</i> var.tenuifolia D'Urville | Rutaceae | - | Leaves with succulent stem | Herb | Oral | | M, A1.A2 |
| 114 | Gedai (M) | Common cold | <i>Zanthoxylum chalybeum</i> Engl. | Rutaceae | 31 | Seed | Tree | Oral | | M |
| 115 | Wulchi (M) | Scorpion bite | <i>Anemia schimperiana</i> Presl. | Schizaeaceae | 290 | Leaves | Herb | Oral | | M |
| 116 | Mitmita (A) | Malaria | <i>Capsicum annuum</i> L. | Solanaceae | - | Fruit | Herb | Oral | | A1 |
| 117 | Guni deshe (A) | Snake bite | <i>Datura metel</i> L. | Solanaceae | 103 | Whole | Herb | Oral/ topical | | A1 |
| 118 | Atsefaris (M) | Toothache | <i>Datura stramonium</i> L. | Solanaceae | | Leaf bud | Shrub | Topical | | M |
| 119 | Ara Deshe (A) | Liver disease | <i>Discopodium penninervium</i> Hochst. | Solanaceae | 339 | Leaves | Tree | Inhale | | A2 |
| 120 | Tumbaho (M) | Leeches | <i>Nicotiana tabacum</i> L. | Solanaceae | - | Leaves | Herb | Topical/ Oral | | A1, A2 |
| 121 | Achi Kolpo (M), Garenti (A) | Amoebiasis, Stomach ache, Evil eye | <i>Solanum dasyphyllum</i> Schumach. | Solanaceae | 9,94 | Root | Herb | Oral | | M, A1,A2 |

| | | | | | | | | | |
|-----|----------------------------------|--|--|------------------|-------------|--------|-------|---------|----|
| 122 | Kotse Garenti (A) Bulabulo(M) | Ascariasis, stomach ache | <i>Solanum incanum</i> L. | Solanaceae | 94 | Root | Herb | Oral | M |
| 123 | Muto (M) | Cold | <i>Withania somnifera</i> (L.) Dunal | Solanaceae | 176, 208 | Root | Herb | Oral | M |
| 124 | Azi deshe/ masna (A) | Swelling | <i>Veronica abyssinica</i> Fres. | Scrophulariaceae | 316, 334 | Leaves | Herb | Topical | A2 |
| 125 | Enaro (M) | Headache, Vomiting | <i>Lantana camara</i> L. | Verbenaceae | 169 | Leaves | Shrub | Oral | M |
| 126 | Dolo amede (M) | Headache | <i>Lantana trifolia</i> L. | Verbenaceae | 190 | Leaves | Shrub | Oral | M |
| 127 | Atuch | Stomach ache | <i>Verbena officinalis</i> subsp. <i>africana</i> R.Fernandes & Verdc. | Verbenaceae | 268 | Leaves | Herb | Oral | A2 |
| 128 | Kuze (M) | Ascariasis, Food poisoning , Vomiting | <i>Balanites rotundifolia</i> (van <i>Tieghem</i>) Blatter | Zygophyllaceae | 41 | Leaves | Tree | Oral | M |

Study sites: M= Maale, A1= Ari 1 and A2= Ari 2 ; Plant names are checked based on www.theplantlist.org.

Malaria, diarrhoea, ascariasis and amoebiasis were the most frequently cited health problems in Maale. Ascariasis is a helminthic human infection caused by *Ascaris lumbricoides*, a large roundworm. It is found worldwide with highest prevalence in tropical and subtropical regions, and in areas with inadequate sanitation [38,39]. Malaria, headache, stomach ache and diarrhoea were the main cited ailments in Ari 1 and Ari 2. Respondents said they identified and diagnosed the type of ailments by visual observation of the human body. Yellow, white of the eyes, for example, indicated liver health problem. Lulekal et al. [40] reported similar ways of diagnosis among traditional healers in Mana Angetu, southeastern Ethiopia. On the other hand, tape worm and ascariasis were diagnosed by observation of the worms in human faeces by the patients themselves or elders in the case of young children.

The average number of medicinal plants cited by each study participant of different age and gender groups is displayed in Table 2. The highest numbers of species were mentioned by participants from the Maale ethnic community. Moreover, in all study sites the results revealed that male participants mentioned a higher number of medicinal plants than female ones (t-test, $p < 0.05$). Our results are in agreement with the study results reported for the Bench ethnic communities in south-western Ethiopia by Giday et al. [16] that they found that the male study participants to have greater plant knowledge than females, because boys were favoured for the transfer of medicinal plant knowledge.

Table 2 Average number of medicinal plants cited per respondent groups

| Study sites | Gender | | T-test | Age groups | | T-test |
|-----------------|--------|--------|---------|------------|-------|---------|
| | Male | Female | P-value | > 40 | ≤40 | P-value |
| Maale (n = 26) | 20.33 | 13.64 | 0.01* | 19.67 | 12.73 | 0.01* |
| Ari 1(n = 24) | 9.40 | 5.00 | 0.00* | 8.06 | 7.22 | 0.65 |
| Ari 2 (n = 24) | 7.57 | 3.80 | 0.00* | 6.77 | 5.09 | 0.13 |
| Overall | | | 0.01* | | | |

People aged above 40 are considered matured adult by the community; P-values $< 0, 05$ are marked with *.

In all study sites more medicinal plants were reported by participants over 40 years of age than by younger ones but this difference was significant for the Maale site. Awas [11] found that older people knew more than the youngsters in his study of the Kefficho people, in south-western Ethiopia. This may be due to the fact that knowledge tends to be accumulated through time. The relative lack of knowledge in the young will further be aggravated in the future when many species become scarce in the landscape and this might have negative impact on knowledge continuity in the near future. On the other hand, the results from Ari showed that knowledge is not always disappearing, as there were no significant differences in plant knowledge between age groups.

Table 3 shows the familiarity indices of medicinal plants for the treatment of different types of health problems. *Meyna tetraphylla* in Maale and *Solanum dasycyllum* in Ari 1 and 2 were most cited. There was little correspondence between the two sites with regard to frequently mentioned plant species, but health problems treated with medicinal plants were quite similar. Species with high familiarity indices should be considered for further phytochemical and pharmacological studies.

Table 3 Familiarity index (FI) of medicinal plants In Maale (M), Ari 1 (A1) and Ari 2 (A2)

| Scientific name | Family name | Illness | Frequency | FI | Site |
|------------------------------|----------------|-------------------------------|-----------|------|------|
| <i>Meyna tetraphylla</i> | Rubiaceae | Ascariasis | 11 | 0.42 | M |
| <i>Plectranthus barbatus</i> | Lamiaceae | Amoebiasis | 11 | 0.42 | M |
| <i>Ozoroa insignis</i> | Anacardiaceae | Ascariasis | 11 | 0.42 | M |
| <i>Hypoestes forskalii</i> | Acanthaceae | Stomach ache | 10 | 0.38 | M |
| <i>Ocimum basilicum</i> | Lamiaceae | Stomach ache | 10 | 0.38 | M |
| <i>Celosia trigyna</i> | Amaranthaceae | Tapeworm | 10 | 0.38 | M |
| <i>Plectranthus barbatus</i> | Lamiaceae | Stomach ache | 10 | 0.38 | M |
| <i>Solanum dasyphyllum</i> | Solanaceae | Stomach ache | 16 | 0.67 | A1 |
| <i>Indigofera spicata</i> | Leguminosae | Ascariasis | 12 | 0.50 | A1 |
| <i>Ruta chalepensis</i> | Rutaceae | Stomach ache | 12 | 0.50 | A1 |
| <i>Plumbago zeylanica</i> | Plumbaginaceae | Snake bite | 10 | 0.42 | A1 |
| <i>Acmella caulirhiza</i> | Compositae | Tonsillitis | 9 | 0.38 | A1 |
| <i>Kosteletzkya adoensis</i> | Malvaceae | Fresh cut to stop bleeding | 9 | 0.38 | A1 |
| <i>Vernonia amygdalina</i> | Compositae | Malaria | 9 | 0.38 | A1 |
| <i>Citrus aurantifolia</i> | Rutaceae | Oral trash | 9 | 0.38 | A1 |
| <i>Acmella caulirhiza</i> | Compositae | Tooth ache | 8 | 0.33 | A1 |
| <i>Oxalis radicata</i> | Oxalidaceae | Fresh cut to stop bleeding | 8 | 0.33 | A1 |
| <i>Rhamnus prinoides</i> | Rhamnaceae | Tonsillitis | 8 | 0.33 | A1 |
| <i>Citrus aurantifolia</i> | Rutaceae | Food poisoning | 8 | 0.33 | A1 |
| <i>Solanum dasyphyllum</i> | Solanaceae | Stomach ache | 10 | 0.42 | A2 |
| <i>Garcinia livingstonei</i> | Clusiaceae | Oral trash | 10 | 0.42 | A2 |
| <i>Millettia ferruginea</i> | Leguminosae | Close wound caused by Jiggers | 9 | 0.38 | A2 |
| <i>Nicotiana tabacum</i> | Solanaceae | Leeches | 8 | 0.33 | A2 |
| <i>Hagenia abyssinica</i> | Rosaceae | Tape worm | 8 | 0.33 | A2 |

Preference ranking among ten key informants for eight selected medicinal plants used for the treatment of ascariasis is shown in Table 4. From Table 4 it appears that people had certain preferences for medicinal plants based on their perceived efficacy for the treatment of the frequently cited health problem, ascariasis. Species with higher preference ranking may indicate effective healing properties, which suggests that they are interesting for further phytochemical and pharmacological research.

Table 4 Preference ranking of eight medicinal plants used for the treatment of ascariasis based on perceived efficacy by ten respondents in Maale

| Scientific name | Total sum of ranks (n = 10) | Standard deviation | Mean ranking | Rank values |
|-------------------------------|-----------------------------|--------------------|--------------|-------------|
| <i>Ozoroa insignis</i> | 18 | ± 1.0 | 1.8 | 1 |
| <i>Meyna tetraphylla</i> | 22 | ± 1.4 | 2.2 | 2 |
| <i>Indigofera spicata</i> | 34 | ± 1.6 | 3.4 | 3 |
| <i>Vangueria apiculata</i> | 45 | ± 1.6 | 4.5 | 4 |
| <i>Balanites rotundifolia</i> | 54 | ± 2.1 | 5.4 | 5 |
| <i>Pergularia daemia</i> | 59 | ± 1.7 | 5.9 | 6 |
| <i>Senna singueana</i> | 61 | ± 0.6 | 6.1 | 7 |
| <i>Combretum aculeatum</i> | 67 | ± 2.0 | 6.7 | 8 |

Mechanisms of knowledge transfer among social groups

Most medicinal plant knowledge is transferred orally, as was reported by 71 study participants (96%) in the study sites (Table 5). This is the dominant mechanism of traditional knowledge transfer system in Africa [8], although this type of transfer cannot guarantee continuity under the current circumstances, where plant resource degradation and loss is severe. Most people (82%) obtained their knowledge from their (grand) parents, which is similar to the percentage found by a study in Wonago district, Ethiopia [41]. The great majority of the study participants preferred to transfer their medicinal plant knowledge to their children or grandchildren, which favours knowledge conservation and continuity mostly within the family line.

Table 5 Acquisition and willingness to transfer medicinal plant knowledge in the study sites

| | Maale Frequency (%) | Ari 1 Frequency (%) | Ari 2 Frequency (%) | Total Frequency (%) |
|--|------------------------|------------------------|------------------------|------------------------|
| Knowledge acquired | | | | |
| Parents/grandparents | 20 (76.9) | 19 (79.1) | 22 (91.7) | 61 (81.4) |
| Friends | 1 (3.9) | 1 (4.2) | 0 (0.0) | 2 (2.7) |
| Neighbours | 2 (7.7) | 1 (4.2) | 0 (0.0) | 3 (4.1) |
| Other (Given from God, accidentally encountered individuals) | 3 (11.5) | 3 (12.5) | 2 (8.3) | 8 (10.8) |
| Knowledge willing to transfer to: | | | | |
| Children and grand children | 17 (65.4) | 22 (91.6) | 20 (87.5) | 59 (79.7) |
| Any family member | 4 (15.4) | 1 (4.2) | 1 (4.2) | 6 (8.1) |
| Neighbours | 4(15.4) | 0(0.0) | 0 (0.0) | 4 (5.4) |
| No one | 1(3.8) | 1(4.2) | 3 (12.5) | 5 (6.8) |

The majority of study participants who showed interest to transfer their medicinal plant knowledge, preferred to transfer this to their first son. This preference was associated with the perception and fear that daughters would share the knowledge with their husbands' family when they get married. Knowledge transfer to the new family was not appreciated by respondents with the perception that their secret knowledge would be known by others. When the first son was not considered trustworthy to keep the knowledge secretly or not judged interested in the subject as assessed through what he says, what he does and his general attitudes, parents transferred it to their second son or grandson.

In most cases there existed a concern among communities and elder knowledgeable people on plant resource degradation around their village. Dwindling resources around settlements may have negative implications for the future transfer of medicinal plant knowledge, as elders are unable to walk long distances from their residence. If the plants are no longer available, it becomes difficult to show and teach others about their names, characteristics and uses.

Demographic factors influencing medicinal plant knowledge

Gender significantly predicted medicinal plant knowledge. Male study participants knew a higher number of medicinal plants than female ones. This is probably associated with the perception and culture of both ethnic communities to favour males in transferring medicinal plant knowledge. This must have implications for the cultivation of medicinal plant species in

home gardens as women play a major role in managing these gardens. Moreover, site also strongly influenced the number of medicinal plants known and used (Table 6). Religion, family size and education did not influence plant knowledge.

Table 6 Socio-demographic and site factors prediction on the number of medicinal plant knowledge

| | Unstandardized | | Standardized | p-value |
|---------------------------------|------------------|------------|------------------|---------|
| | Beta Coefficient | Std. error | Beta Coefficient | |
| $R^2 = 74.2$ | | | | |
| Constant | 3.831 | 0.443 | | |
| Age | 0.016 | 0.006 | 0.198 | 0.014* |
| Gender | -0.819 | 0.149 | -0.419 | 0.000* |
| Educational level | 0.266 | 0.167 | 0.135 | 0.117 |
| Family size | -0.041 | 0.025 | -0.122 | 0.101 |
| Site (Ari 1) | -1.485 | 0.185 | -0.716 | 0.000* |
| Site (Ari 2) | -1.905 | 0.189 | -0.918 | 0.000* |
| Religion (Protestant Christian) | 0.136 | 0.178 | 0.068 | 0.449 |
| Religion (Orthodox Christian) | 0.190 | 0.199 | 0.093 | 0.343 |

Sites are compared against Maale site. Religion is compared against traditional religion. Variables with a significant influence ($P < 0, 05$) are marked with *.

Older members of the community in Maale knew more medicinal plants than youngsters (Table 2), which may also reflect an ongoing gradual knowledge loss of knowledge in the study community. Hence, it is important to include traditional knowledge in the school curricula to raise awareness as recommended by Awas [11].

Similarities on in medicinal plant knowledge among sites

Generally we found little similarity among the three study sites. The calculated Jaccard similarity index was relatively higher between the two Ari sites (0.33), lower between Maale and Ari 1 (0.14) and lowest between Maale and Ari 2 (0.08). Our results showed that the Ari 1 and Ari 2 sites are more similar in medicinal plant knowledge than each of them compared to Maale. This can be explained by the geographical proximity between the two Ari sites and also supported by the fact that they belong to the same ethnic group and share their cultural background.

Medicinal plant collection, conservation efforts and major threats

Study participants mostly collected medicinal plants from crop fields, home gardens and nearby forest patches. The results of the growth form analysis revealed that herbs were the most common growth form and the dominant plant parts harvested were leaves. This was found by many researchers in different parts of East Africa [42,43]. Harvesting of leaves may not have negative effects on resource availability, provided that the plant itself is not destroyed during harvesting, which is especially relevant for herbs.

A few study participants brought seedlings of medicinal herbs from fields and forest patches and started cultivating them in their home gardens. Their main reasons for doing so were to conserve plants that were scarce in their surroundings, to keep herbs available that were unavailable during the dry season and to have the medicine at hand during emergency

situations. The practice of nurturing of wild species in home gardens was limited to a very small area, because people suspected that their importance as medicine could be easily guessed by outsiders. This unwillingness to share resources with neighbours or other non-family members may negatively affect the conservation of medicinal plant knowledge and resources. Giday and Teklehaymanot [44] did not encounter any cultivation of medicinal plants by Afar people in Ethiopian Ada'ar district. The main reason mentioned for this was the easily availability of the medicinal plant in areas that are not far from the homesteads.

Agricultural expansion and lack of cultivation tradition were indicated by our study participants as major threats in all study sites (Table 7). The conversion of natural vegetation to agricultural fields is a serious issue in Eastern Africa, where the rural population is highly dependent on subsistence agriculture [45]. Sustainable management of resources may not be an easy task, but it is crucial to guarantee future access to herbal medicine for rural communities [46]. Other threats that were mentioned were a lack of maintenance and the fact that people with little knowledge considered medicinal plants growing among their crops as weeds were likely to uproot them.

Table 7 Threats for medicinal plant resources and their priority ranking

| Threats | Herbs | | | Trees, shrubs, climbers | | |
|---|-------|-------|-------|-------------------------|-------|-------|
| | Maale | Ari 1 | Ari 2 | Maale | Ari 1 | Ari 2 |
| Agricultural land expansion | 2 | 2 | 2 | 1 | 1 | 1 |
| Lack of cultivation and maintenance | 1 | 1 | 1 | 2 | 2 | 2 |
| Conflicting uses (timber, fencing, firewood, etc) | 0 | 0 | 0 | 3 | 3 | 3 |
| Grazing pressure | 4 | 4 | 4 | 4 | 5 | 4 |
| Drought or unreliable rainfall | 3 | 3 | 3 | 5 | 4 | 5 |

“0” = not mentioned as a threat.

Most respondents (76% in Maale, 75% in Ari 1, 83% in Ari 2) collected plants at any time or day of the week. A few herbalists did not harvest plants on Sundays and some orthodox Christians did not harvest on Wednesdays and Fridays as these are fasting days. In emergency cases, they used stored herbal medicine on these days.

Commercialization of herbal medicine

Marketing of medicinal plants was not common at the studied markets, apart from the well-known *Hagenia abyssinica* flowers and *Embelia shimperi* seeds (both wild collected) and the cultivated *Allium sativum* and *Artemisia absinthium* that are also used as spices. The commercialization of other wild and semi-wild species is hampered by the fact that medicinal knowledge is only held by few people. Tolassa [21] also found only a few species (*Thalictrum rhynchocarpum*, *Piper capense* and *Echinops kebericho*) at Gimibi and Gaba Senbeta markets, in western Ethiopia, while Giday et al. [16] found that the few species sold by Bench communities in south-western Ethiopia doubled as spices. In our study area, market chains were short and medicinal plants were directly sold by harvesters without further processing. The economic importance of the trade was limited: the price of *Embelia shimperii* seeds was only 2 Ethiopian Birr (0.10 \$) per glass (about 250 ml). The product was not always available and marketed in small quantities.

Although herbalists' incomes obtained through giving treatments to local communities were not high, the most important aspect observed from traditional healers is local recognition and

respect by the community. In our study sites, respondents mentioned that on average they were consulted by patients five times per month. The charges for a treatment depended on the type of health problem treated and on patient / healers' relationships. Payment per treatment ranged from 1-10 Ethiopian Birr (equivalent to 0.05 - 0.5 \$) and sometimes were free of charge, especially in Maale area. However, in the Ari sites traditional healers believed that whatever relation existed, the patient had to pay money for a consult; otherwise they underlined that the medicine would not be effective. Limited income obtained from marketing of medicinal plants or from treatments given to patients may have negative implications future cultivation, maintenance and conservation of medicinal plants in the landscape.

Conclusion

This study indicated that medicinal plants were important for the health care of the Maale and Ari communities, as they used at least 128 species and traditional medicine was considered as the first line of treatment by 89% of our respondents. Knowledge differed between and within ethnic groups and also among sites. The fact that knowledge transfer was predominantly to family members and in particular to first-born sons may negatively affect its continuity and may result in knowledge loss if medicinal plant resources become scarce in the future. Low income obtained from marketing of medicinal plants and herbal treatments may have strong implications on the future conservation of medicinal plants in the landscape.

Agricultural land expansion and a lack of cultivation practices limit the availability of medicinal plant resources in the area. Urgent action is required towards conservation (both ex-situ and in-situ combined) of medicinal plants and traditional knowledge before we lose them in the near future. Moreover, land use planning and development plan should also consider strategies that stimulate medicinal plant availability in the landscape and work towards increasing their cultivation to complement ex-and in-situ conservation efforts.

Popular medicinal species such as *Solanum dasyphyllum*, *Indigofera spicata*, *Plumbago zeylanica*, *Meyna tetraphylla* and multi-use species like *Oxalis radicata* are good candidates for consideration in further phytochemical and pharmacological research to verify their efficacy.

Competing interests

The authors declare that they have no competing interests.

Authors' contributions

The first author collected and analyzed the data, and wrote the draft manuscript and other authors made comments on the data analysis and on the write-up of the manuscript. All authors read and approved the final manuscript.

Acknowledgements

This research project was granted by the Netherlands Organization for International Cooperation in Higher Education (Netherlands Fellowship Programme) as part of the PhD

research of the first author. Our gratefulness goes to the informants in all study sites who shared with us their knowledge on medicinal plants used for the treatment of human health problems. Our appreciation goes also to the staff of the National Herbarium of Addis Ababa University and the Biosystematics group at Wageningen University for their technical assistance. We are also thankful to zonal, district and kebele administrators and experts (health, forestry and agricultural development) in the study area.

References

1. Chaya N: **Poor access to health Services: Ways Ethiopia is overcoming it.** *Res Comment* 2007, **2(2)**:1–6.
2. IBC: *National biodiversity strategy and action plan.* Addis Ababa, Ethiopia: Government of the federal Democratic Republic of Ethiopia; 2005:103.
3. Flatie T, Gedif T, Asres K, Gebre-Mariam T: **Ethnomedical survey of Berta ethnic group Assosa Zone, Benishangul-Gumuz regional state, mid-west Ethiopia.** *J Ethnobiol Ethnomed* 2009, **5(14)**:1–11.
4. Gedif T, Hahn HJ: **The use of medicinal plants in self-care in rural central Ethiopia.** *J Ethnopharmacol* 2003, **87**:155–161.
5. Yirga G, Zeraburk S: **Ethnobotanical study of traditional medicinal plants of Gindeberet district, Western Ethiopia.** *Mediterr J Soc Sci* 2011, **2(4)**:49–54.
6. Joy PP, Thomas J, Mathew S, Skaria BP: **Medicinal Plants.** In *Trop Hort.* 2nd edition. Edited by Bose TK, Kabir J, Das P, Joy PP. Calcutta: Naya Prokash; 2001:449–632.
7. Bekele E: *Study on Actual Situation of Medicinal Plants in Ethiopia, Addis Ababa.* 2007.
8. Fassil H: *We do what we know: local health knowledge and home-based medicinal plant use in Ethiopia.* PhD thesis Green College, Oxford University; 2003.
9. Fassil H: *Beyond Plants, Professionals & Parchments: The role of home-based medicinal plant use and traditional health knowledge in primary health care in Ethiopia.* 2005.
10. Giday M: *Medicinal plant of the Bench, Meinit and Sheko cultural groups in Ethiopia.* Addis Ababa, Ethiopia: PhD Thesis, Addis Ababa University; 2007.
11. Awas T: *Plant diversity in Western Ethiopia, Ecology, Ethnobotany and conservation.* Norway: PhD thesis, University of Oslo; 2007.
12. Regassa T: *State constitutions in Federal Ethiopia: A preliminary observation: a summary for the Bellagio Conference.* 2004:1–12.
13. Hunde D, Asfaw Z, Kelbessa E: **Use of traditional medicinal plants by people of 'Boosat' sub district, central eastern Ethiopia.** *Ethiop J Health Sci* 2006, **16(2)**:141–155.

14. Teklehaymanot T, Giday M: **Ethnobotanical study of medicinal plants used by people in Zegie Peninsula, North-western Ethiopia.** *J Ethnobiol Ethnomed* 2007, **3**(12):1–11.
15. Yineger H, Yewhalaw D, Teketay D: **Ethnomedicinal plant knowledge and practice of the Oromo ethnic group in south-western Ethiopia.** *J Ethnobiol Ethnomed* 2008, **4**(1):1–10.
16. Giday M, Asfaw Z, Woldu Z, Teklehaymanot T: **Medicinal plant knowledge of the Bench ethnic group of Ethiopia: an ethnobotanical investigation.** *J Ethnobiol Ethnomed* 2009, **5**(34):1–10.
17. Teklehaymanot T: **Ethnobotanical study of knowledge and medicinal plants use by people in Dek Island in Ethiopia.** *J Ethnopharmacol* 2009, **124**:69–78.
18. Ashagre M: *Ethnobotanical Study of Medicinal Plants in Guji Agro-pastoralists.* Blue Hora District of Borana Zone: Oromia Region, Ethiopia. MSc thesis. Addis Ababa University; 2011.
19. Dalle GT, Maass BL, Isselstein J: **Plant biodiversity and ethnobotany of pastoralists in southern Oromia.** *Ethiop Econ Bot* 2005, **59**(1):43–65.
20. Yirga G: **Assessment of indigenous knowledge of medicinal plants in Central zone of Tigray, Northern Ethiopia.** *Afr J Plant Sci* 2010, **4**:006–011.
21. Tolasa E: *Use and conservation of traditional medicinal plants by indigenous people in Gimbi woreda, western Wellega, Ethiopia.* MSc thesis. Addis Ababa University; 2007:121.
22. Friis BI, Demissew S, Breugel P: *Atlas of the Potential Vegetation of Ethiopia.* 2010.
23. CSA: *Summary and Statistical Report of the 2007 Population and Housing Censuses.* 2008.
24. Martin GJ: *Ethnobotany: a methods manual* London. UK: Chapman and Hall; 1995.
25. Alexiades M: **Collecting ethnobotanical data. An introduction to basic concepts and techniques.** In *Selected Guideline for ethnobotanical research: A Field Manual.* Edited by Alexiades M. U.S.A. Sheldon JW: The New York Botanical Garden; 1996:53–94.
26. Cotton CM: *Ethnobotany: Principles and applications* Chichester. New York: John Wiley and Sons Ltd; 1996.
27. Edwards S, Tadesse M, Hedberg I (Eds): *Canellaceae to Euphorbiaceae.* *Flora of Ethiopia and Eritrea Volume 2.* Addis Ababa, Ethiopia: Issue part 2. The National Herbarium; 1995. Department of Systematic Botany, Uppsala, Sweden.
28. Edwards S, Demissew S, Hedberg I (Eds): *Hydrocharitaceae to Arecaceae.* *Flora of Ethiopia and Eritrea Volume 6.* Addis Ababa, Ethiopia: The National Herbarium; 1997. Department of Systematic Botany, Uppsala, Sweden.

29. Edwards S, Tadesse M, Demissew S, Hedberg I (Eds): *Magnoliaceae to Flacourtiaceae. Flora of Ethiopia and Eritrea Volume 2 Issue part 1*. Addis Ababa, Ethiopia: The National Herbarium; 2000. Department of Systematic Botany, Uppsala, Sweden.
30. Hedberg I, Edwards S (Eds): *Pittosporaceae to Araliaceae. Flora of Ethiopia Volume 3*. Addis Ababa, Ethiopia: The National Herbarium; 1989. Department of Systematic Botany, Uppsala, Sweden.
31. Hedberg I, Edwards S, Nemomissa S (Eds): *Apiaceae to Dipsacaceae. Flora of Ethiopia and Eritrea Volume 4 Issue part 1*. Addis Ababa, Ethiopia: The National Herbarium; 2003. Department of Systematic Botany, Uppsala, Sweden.
32. Hedberg I, Friis I, Edwards S (Eds): *Asteraceae Volume 4. Issue part 2. Flora of Ethiopia and Eritrea*. Addis Ababa, Ethiopia: The National Herbarium; 2004. Department of Systematic Botany, Uppsala, Sweden.
33. Hedberg I, Kelbesa E, Edwards S, Demissew S, Persson E (Eds): *Gentianaceae to Cyclocheilaceae Volume 5. Flora of Ethiopia and Eritrea*. Addis Ababa, Ethiopia: The National Herbarium; 2006. Department of Systematic Botany, Uppsala, Sweden.
34. **The plant list a working list of all plant species**. 2013. (accessed date) WWW.Theplantlist.Org. Accessed date 2013.
35. Höft M, Barik SK, Lykke AM: *Quantitative Ethnobotany. Applications of multivariate and statistical analyses in ethnobotany*. People and Plant Working Paper; 1999.
36. Tabuti JRS, Dhillion SS, Lye KA: **The status of wild food plants in Bulamogi County, Uganda**. *Int J Food Sci Nutr* 2004, **55**(6):485–498.
37. Pallant J: *SPSS survival manual, a step by step guide to data analysis using SPSS for Windows*. 3rd edition. 2007.
38. Ascariasis: 2013. (accessed date) http://www.stanford.edu/class/humbio103/ParaSites2005/Ascaris/JLora_ParaSite.htm. Accessed date 2013.
39. WHO: *Water Sanitation Health- Water related diseases*. WHO/WSH/ WWD/DFS.01; 2013.
40. Lulekal E, Kelbessa E, Bekele T, Yineger H: **An ethnobotanical study of medicinal plants in Mana Angetu District, south-eastern Ethiopia**. *J Ethnobiol Ethnomed* 2008, **4**:1–10.
41. Mesfin F, Demissew S, Teklehaymanot T: **An ethnobotanical study of medicinal plants in Wonago Woreda, SNNPR Ethiopia**. *J Ethnobiol Ethnomed* 2009, **5**(28):1–18.
42. Togola A, Diallo D, Dembele S, Barsett H, Paulsen BS: **Ethnopharmacological survey of different uses of seven medicinal plants from Mali, (West Africa) in the regions Doila, Kolokani and Siby**. *J Ethnobiol Ethnomed* 2005, **1**(7):1–9.

43. Otieno NE, Analo C: **Local indigenous knowledge about some medicinal plants in and around Kakamega forest in western Kenya.** *F1000Res* 2012, **1**(40):1–17.
44. Giday M, Teklehaymanot T: **Ethnobotanical study of plants used in management of livestock health problems by Afar people of Ada’ar District, Afar Regional State Ethiopia.** *J Ethnobiol Ethnomed* 2013, **9**(8):1–10.
45. NCAPD: *Seeking solutions for traditional herbal medicine: Kenya develops a national policy.* Nairobi, Kenya: National Coordinating Agency for Population & Development; 2008. Policy brief No.1.
46. Cunningham AB: **African medicinal plants: Setting priorities at the interface between conservation and primary health care.** *People Plants Working Paper* 1993, **1**:1–50.

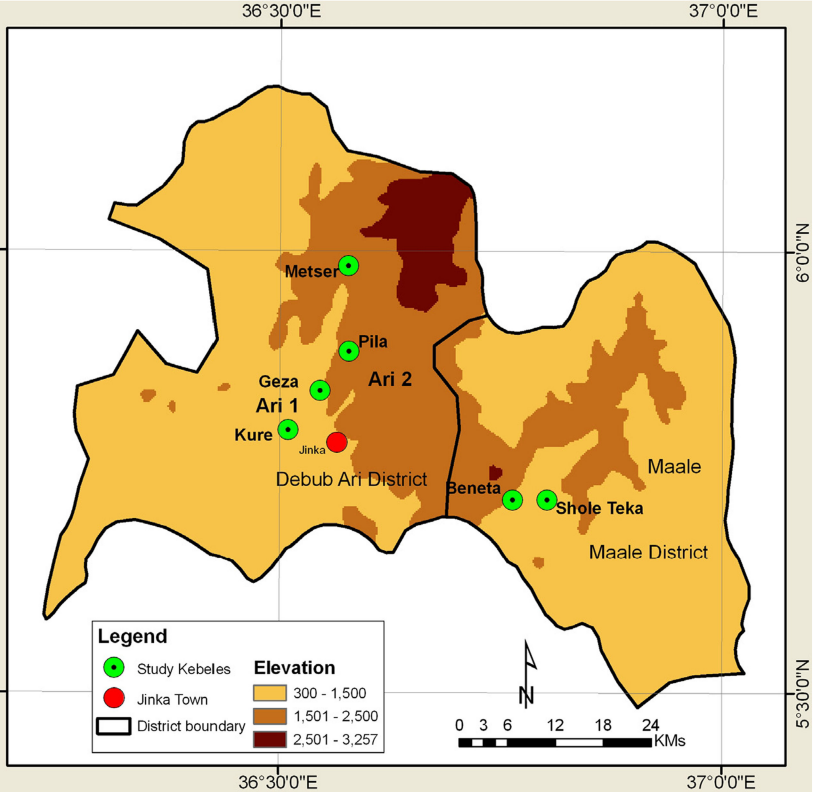
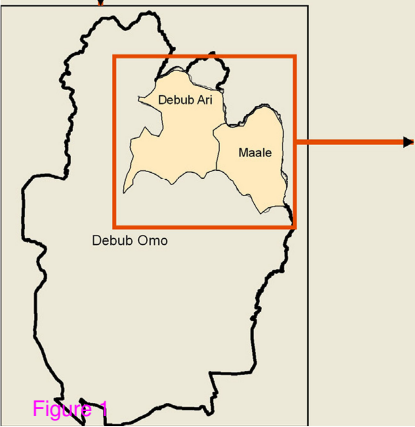


Figure 1